



## PE / PP Mix

### Definition

Quality name: "PE/PP-mix"

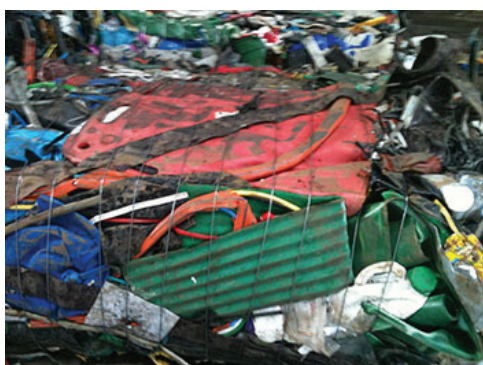
Nr.	Property	Unit	Limit values	Additional info
1	Hard plastic	%	$\geq 90$	PVC will appear
2	PE and PP	%	$\geq 60$	Included in no. 1
3	Film PE/PP	%	$\leq 5$	
4	PVC	%	$\leq 5$	Included in no. 1
5	Items size	m	$\leq 1,25$	
6	Form	-	-	Bales
7	Wrapping	-	-	Bales can be wrapped
8	Loading weight	ton	$\geq 20$	Loaded on a 13,6 m tautliner
9	Separation	-	-	Lightly manual sorted by consumers
10	Origin			Hard plastic collected from recycling centres



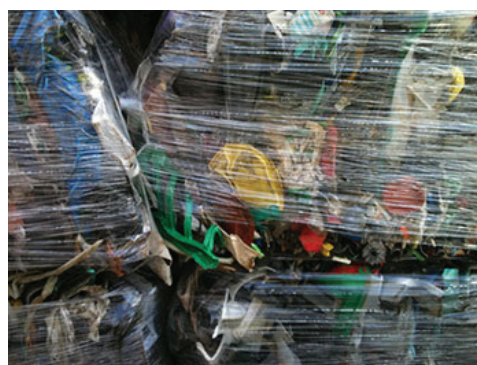
Material before baling



Material before baling



PE/PP-mix baled unwrapped



PE/PP-mix baled wrapped