



Bottles & Trays Mix with film

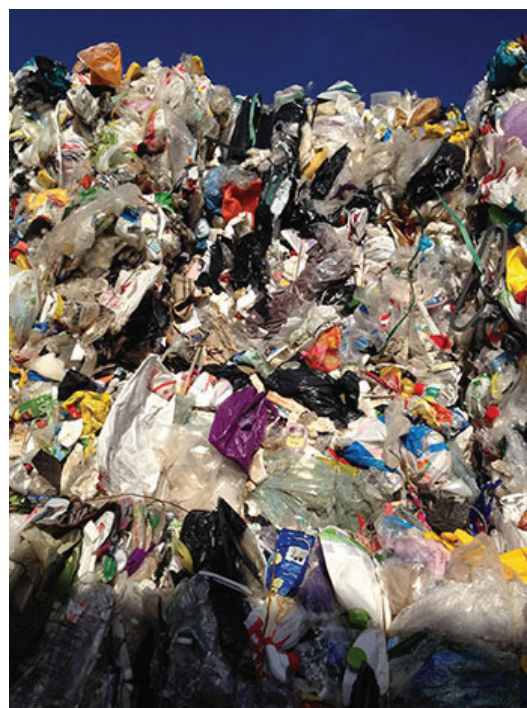
Definition

Quality name: "Household bottles and trays-mix"

Nr.	Property	Unit	Limit values	Additional info
1	Hard plastic	%	≥ 60	
2	PE and PP	%	≥ 40	Included in no. 1
3	Film PE/PP	%	≤ 10	
4	PET	%	≤ 20	Included in no. 1
5	Other material	-	-	Metal, paper and cardboard will appear
6	Items size	m	≤ 0,8	
7	Form	-	-	Bales
8	Wrapping	-	-	Bales can be wrapped
9	Loading weight	ton	≥ 20	Loaded on a 13,6 m tautliner
10	Separation	-	-	None
11	Origin	-	-	Household hard plastic, post consumer



Material before baling



Household bottles & trays-mix baled and unwrapped